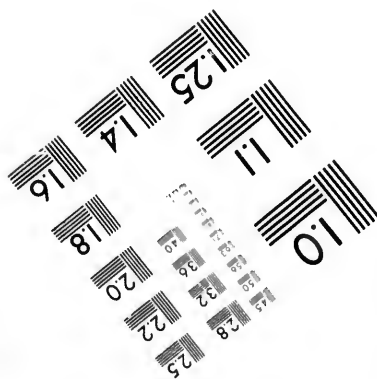
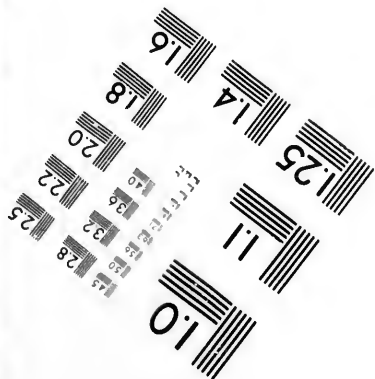
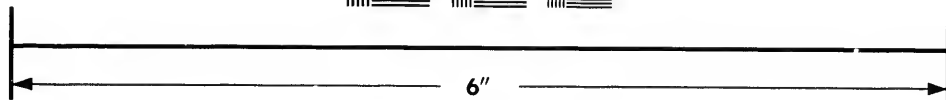
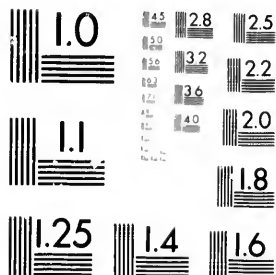


**IMAGE EVALUATION
TEST TARGET (MT-3)**



**Photographic
Sciences
Corporation**

23 WEST MAIN STREET
WEBSTER, N.Y. 14580
(716) 872-4503

15
18
28
32
36
22
20
18

**CIHM/ICMH
Microfiche
Series.**

**CIHM/ICMH
Collection de
microfiches.**

10



Canadian Institute for Historical Microreproductions

Institut canadien de microreproductions historiques

1980

Technical and Bibliographic Notes/Notes techniques et bibliographiques

The Institute has attempted to obtain the best original copy available for filming. Features of this copy which may be bibliographically unique, which may alter any of the images in the reproduction, or which may significantly change the usual method of filming, are checked below.

L'Institut a microfilmé le meilleur exemplaire qu'il lui a été possible de se procurer. Les détails de cet exemplaire qui sont peut-être uniques du point de vue bibliographique, qui peuvent modifier une image reproduite, ou qui peuvent exiger une modification dans la méthode normale de filmage sont indiqués ci-dessous.

- Coloured covers/
Couverture de couleur
- Covers damaged/
Couverture endommagée
- Covers restored and/or laminated/
Couverture restaurée et/ou pelliculée
- Cover title missing/
Le titre de couverture manque
- Coloured maps/
Cartes géographiques en couleur
- Coloured ink (i.e. other than blue or black)/
Encre de couleur (i.e. autre que bleue ou noire)
- Coloured plates and/or illustrations/
Planches et/ou illustrations en couleur
- Bound with other material/
Relié avec d'autres documents
- Tight binding may cause shadows or distortion along interior margin/
La reliure serrée peut causer de l'ombre ou de la distortion le long de la marge intérieure
- Blank leaves added during restoration may appear within the text. Whenever possible, these have been omitted from filming/
Il se peut que certaines pages blanches ajoutées lors d'une restauration apparaissent dans le texte, mais, lorsque cela était possible, ces pages n'ont pas été filmées.
- Additional comments:
Commentaires supplémentaires:

- Coloured pages/
Pages de couleur
- Pages damaged/
Pages endommagées
- Pages restored and/or laminated/
Pages restaurées et/ou pelliculées
- Pages discoloured, stained or foxed/
Pages décolorées, tachetées ou piquées
- Pages detached/
Pages détachées
- Showthrough/
Transparence
- Quality of print varies/
Qualité inégale de l'impression
- Includes supplementary material/
Comprend du matériel supplémentaire
- Only edition available/
Seule édition disponible
- Pages wholly or partially obscured by errata slips, tissues, etc., have been refilmed to ensure the best possible image/
Les pages totalement ou partiellement obscurcies par un feuillet d'errata, une pelure, etc., ont été filmées à nouveau de façon à obtenir la meilleure image possible.

This item is filmed at the reduction ratio checked below/
Ce document est filmé au taux de réduction indiqué ci-dessous.

10X	14X	18X	22X	26X	30X
<input type="checkbox"/>	<input type="checkbox"/>	<input type="checkbox"/>	<input checked="" type="checkbox"/>	<input type="checkbox"/>	<input type="checkbox"/>
12X	16X	20X	24X	28X	32X

The copy filmed here has been reproduced thanks to the generosity of:

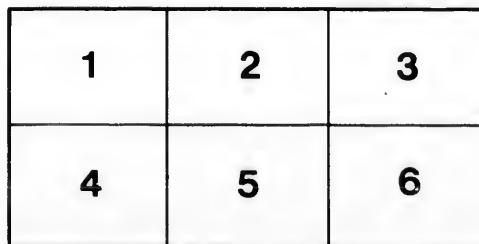
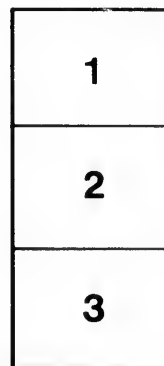
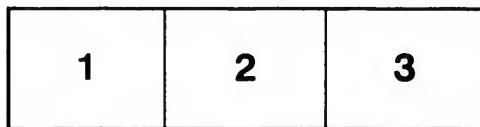
Douglas Library
Queen's University

The images appearing here are the best quality possible considering the condition and legibility of the original copy and in keeping with the filming contract specifications.

Original copies in printed paper covers are filmed beginning with the front cover and ending on the last page with a printed or illustrated impression, or the back cover when appropriate. All other original copies are filmed beginning on the first page with a printed or illustrated impression, and ending on the last page with a printed or illustrated impression.

The last recorded frame on each microfiche shall contain the symbol \rightarrow (meaning "CONTINUED"), or the symbol ∇ (meaning "END"), whichever applies.

Maps, plates, charts, etc., may be filmed at different reduction ratios. Those too large to be entirely included in one exposure are filmed beginning in the upper left hand corner, left to right and top to bottom, as many frames as required. The following diagrams illustrate the method:



L'exemplaire filmé fut reproduit grâce à la générosité de:

Douglas Library
Queen's University

Les images suivantes ont été reproduites avec le plus grand soin, compte tenu de la condition et de la netteté de l'exemplaire filmé, et en conformité avec les conditions du contrat de filmage.

Les exemplaires originaux dont la couverture en papier est imprimée sont filmés en commençant par le premier plat et en terminant soit par la dernière page qui comporte une empreinte d'impression ou d'illustration, soit par le second plat, selon le cas. Tous les autres exemplaires originaux sont filmés en commençant par la première page qui comporte une empreinte d'impression ou d'illustration et en terminant par la dernière page qui comporte une telle empreinte.

Un des symboles suivants apparaîtra sur la dernière image de chaque microfiche, selon le cas: le symbole \rightarrow signifie "A SUIVRE", le symbole ∇ signifie "FIN".

Les cartes, planches, tableaux, etc., peuvent être filmés à des taux de réduction différents. Lorsque le document est trop grand pour être reproduit en un seul cliché, il est filmé à partir de l'angle supérieur gauche, de gauche à droite, et de haut en bas, en prenant le nombre d'images nécessaire. Les diagrammes suivants illustrent la méthode.

rrata
o

pelure,
n à

L

F1028 1885 G7C

Cent

WH

Canada
the wa
Had t
would
under
went f
someth
of prov
and ov
tations
aside, p
progen
ultimat
cause v
rifices

Rou
which
section
from th
the No
and the
tains, f

where
by the
total le
Pacific

tion wa
railway
been e
Lake S
of scien
neers. I
can do
opened
used b
our mil
Indian
of chan
spikes o
of the
tance.

promise
The thi
mounta
tionaliti
Columb
working
tion is
transcon
from oce
to unific

The v
sity tha
way, wh

By G.M. Grant, of Queen's University, King

THE CANADA PACIFIC RAILWAY.

WHAT tempted the people of Canada to undertake so gigantic a work as the Canada Pacific Railway? The difficulties in the way were great, unprecedented, unknown. Had they been known beforehand, the task would not have been attempted. We were under the inspiration of a national idea, and went forward. We were determined to be something more than a fortuitous collocation of provinces. That the difficulties were faced and overcome as they emerged, great temptations to halt or retreat being quietly set aside, proves that we, like our neighbors and progenitors, are not easily discouraged. Our ultimate destiny will be none the worse because we have — not unwillingly — made sacrifices in order to make ourselves a nation.

Roughly speaking, the new country through which the great railway runs consists of three sections,—about a thousand miles of forest from the upper Ottawa to the Red River of the North; then a thousand miles of alluvial; and then five or six hundred miles of mountains, from the first chain of the Rockies to where the waters of the Pacific are sheltered by the breakwater of Vancouver Island. The total length of the line from Montreal to the Pacific terminus is 2895 miles. The first section was long considered impracticable for a railway, and the expense of construction has been enormous. The rocks at the back of Lake Superior are the oldest known to men of science and the toughest known to engineers. But dynamite, if there be enough of it, can do anything. This part of the line was opened last spring most dramatically, it being used before actual completion to transport our militia to put down the half-breed and Indian rising in the North-west. No amount of champagne-drinking and of driving last spikes of gold could have called the attention of the country so emphatically to its importance. The second section runs through what promises to be the great granary of the world. The third is being pushed across a sea of mountains. Thousands of navies of all nationalities are swarming in the valley of the Columbia, and thousands of Chinese are working on the grade easterly. When this section is completed, and the shortest of all transcontinental railways opened for traffic from ocean to ocean, Canada will have attained to unification, so far as links of steel can unify.

The work is so completely a political necessity that — along with the Intercolonial Railway, which binds the Atlantic provinces to

old Canada — it may be called the symbol of our national existence. Whether it will pay the company financially or not is a question on which experts differ. That it will develop the country, and thus at any rate pay indirectly, seems to me unquestionable. The Intercolonial was run for a time at a cost to the Dominion of over half a million dollars annually. It now pays its way; and though shorter through lines are to be built, the increasing local traffic, the best indication of the real value of the road to the country, will keep it running. So, too, the first section of the Canada Pacific pierces a wilderness that wise men said would not furnish business to pay for greasing the wheels; but it gets freight enough in the shape of lumber alone to pay for the wheels as well as the grease. It is revolutionizing the mode of lumber transportation on the upper Ottawa and to the West. The lumber kings find that time is money. It is more profitable to send on logs to market by rail than to continue the tedious plan of floating them, from the banks of far-away lakes and nameless streams in the interior, down countless rapids and slides to unbroken waterways. The danger now is that our timber limits, which constitute an essential part of the national capital, may be exhausted within a measurable time. With regard to the rugged Laurentian regions to the north of Lake Superior, unexplored as yet by men of science, there are grounds for believing that they will turn out to be as rich in mineral wealth as the southern shores of the lake; and no business pays a railway so well as that which a mining community supplies. Then, the fertile plains of the North-west are certain to yield harvests that will tax to the utmost the carrying capacity of branch as well as trunk lines.

These plains extend for eight hundred miles west of Winnipeg. Originally a north-western instead of a western route from Winnipeg had been chosen for the railway, because every one said that the only "fertile belt" was in that direction. This "belt," or rainbow, of fertile land swept semicircularly round a supposed great wedge of the American desert. But the company came to the conclusion that the plains west of Winnipeg had been belied, and that the rainfall was sufficient for the growth of cereals or root crops. Singularly enough, their faith has been vindicated; it turns out that we have no desert. This fact is a physical reality of the greatest importance with regard to the area in the North-west available for

things, asked herself whether they were what he was thinking of when he said, for instance, that he was sick of all the modern cant about freedom and had no sympathy with those who wanted an extension of it. What was needed for the good of the world was that people should make a better use of the liberty they possessed. Such declarations as this took Verena's breath away; she didn't suppose you could hear any one say that in the nineteenth century, even the least advanced. It was of a piece with his denouncing the spread of education; he thought the spread of education a gigantic farce—people stuffing their heads with a lot of empty catchwords that prevented them from doing their work quietly and honestly. You had a right to an education only if you had an intelligence, and if you looked at the matter with any desire to see things as they are, you soon perceived that an intelligence was a very rare luxury, the attribute of one person in a hundred. He seemed to take a pretty low view of humanity, anyway. Verena hoped that something really pretty bad had happened to him—not by way of gratifying any resentment he aroused in her nature, but to help herself to forgive him for so much contempt and brutality. She wanted to forgive him, for after they had sat on their bench half an hour and his jesting mood had abated a little, so that he talked with more consideration (as it seemed) and more sincerity, a strange feeling came over her, a perfect willingness not to keep insisting on her own side and a desire not to part from him with a mere accentuation of their differences. Strange I call the nature of her reflections, for they softly battled with each other as she listened, in the warm, still air, touched with the far-away hum of the immense city, to his deep, sweet, distinct voice, expressing monstrous opinions with exotic cadences and mild, familiar laughs, which, as he leaned towards her, almost tickled her cheek and ear. It seemed to her strangely harsh, almost

brutal, to have brought her out only to say to her things which, after all, free as she was to contradict them and good-natured as she always tried to be, could only give her pain; yet there was a spell upon her as she listened; it was in her nature to be easily submissive, to like being overborne. She could be silent when people insisted, and silent without acrimony. Her whole relation to Olive was a kind of tacit assent to perpetual insistence, and if this had ended by being easy and agreeable to her (and indeed had never been anything else), it may be supposed that the struggle of yielding to a will which she felt to be stronger even than Olive's was not of long duration. Ransom's will had the effect of making her linger even while she knew the afternoon was going on, that Olive would have come back and found her still absent, and would have been submerged again in the bitter waves of anxiety. She saw her, in fact, as she must be at that moment, posted at the window of her room in Tenth street, watching for some sign of her return, listening for her step on the staircase, her voice in the hall. Verena looked at this image as at a painted picture, perceived all it represented, every detail. If it didn't move her more, make her start to her feet, dart away from Basil Ransom and hurry back to her friend, this was because the very torment to which she was conscious of subjecting that friend made her say to herself that it must be the very last. This was the last time she could ever sit by Mr. Ransom and hear him express himself in a manner that interfered so with her life; the ordeal had been so familiar and so complete that she forgot, for the moment, that it was also the first time it had occurred. It might have been going on for months. She was perfectly aware that it could bring them to nothing, for one must lead one's own life; it was impossible to lead the life of another, especially when the person was so different, so arbitrary, so inconsiderate.

(To be continued.)

Henry James.

Cont. Wm Magazine Oct. 1886



sett
prac
hum
with
prai
Nor
fifty
enou
worl
M
grea
direc
of b
Mon
roue
Red
Last
a we
for h
Bay
beari
left
winte
We s
const
Dr.
Dom
the p
outle
facto
fertil
Bay i
North
Pacif
great
Winr
supp
who
by F
expl
and
and
visite
the s
illim
no h
five
com
it le
exar
of ar
ride
had
ing
Rai
ing
or p
seas
fast
soil
the

settlement. That area is now known to be practically illimitable. The waves of a great human sea will in a short time roll steadily on, without break, from the boundary line to the prairies of the mighty Peace River. That new North-west of ours will a century hence have fifty millions of people, and they will raise enough to feed themselves and the rest of the world, if need be.

Manitobans, it may be said here, have also great expectations of being able to export directly to Liverpool by Hudson's Bay, and of being thus independent of Chicago and Montreal alike. Should such an alternative route prove a reality, it would serve the whole Red River valley, as well as the Saskatchewan. Last year the Dominion Government sent out a well-equipped vessel to ascertain definitely for how many months in the year the Hudson's Bay Straits are navigable, and other facts bearing on the question at issue. Parties were left at different points along the coast to winter, and make all needed observations. We shall soon know whether it is worth while constructing a railway to Fort Churchill. Dr. Robert Bell, Assistant Director of the Dominion Geological Survey, is sanguine that the produce of the North-west will have a new outlet in this direction. If so, it will be a potent factor in the development of those far inland fertile wildernesses. But this line to Hudson's Bay is as yet in the air. For years to come the North-west must be served by the Canada Pacific Railway. But how came it that the greater part of the country directly west from Winnipeg to the Rocky Mountains was once supposed to be semi-desert? Captain Palliser, who was sent with a well-organized expedition by Her Majesty's Government, in 1857, to explore the country between Lake Superior and the Rocky Mountains, found it rainless and condemned it. Superficial observers who visited it subsequently, and looked only at the short russet-colored grass that covered its illimitable, treeless, terribly lonely plains, had no hesitation in confirming his opinion. But five or six years ago Mr. John Maccoun, an accomplished practical botanist, after exploring its lengthways and crossways and thoroughly examining soil, flora, and fauna, gave testimony of an entirely opposite character. He was derided as an enthusiast or worse, but his opinions had probably something to do with determining the new route taken by the Canada Pacific Railway; and in 1881 and 1882 settlers, ignoring the proved fertility of the "fertile belt," or postponing its claims to a more convenient season, took up land along the railway almost as fast as it was constructed. They found that the soil was actually better for their purposes than the heavy tenacious loam of the Red River

valley, just because it was lighter. Population flowed for some four hundred miles west of Winnipeg to the little towns of Regina and Moosegaw. There the masses of drift that constitute the "Coteau" of the Missouri show themselves, and there it was then said the good land ceased. The railway was built in the early part of 1883 four hundred miles farther west, and soon after Mr. Sandford Fleming and myself had sufficient opportunities of examining the nature of the soil. Far from being barren, "it resembles," says Mr. Fleming, "in color and character that of the Carse of Gowrie in Perthshire," notoriously the most productive district in Scotland.

But why, then, had those vast plains been condemned? Because there is very little rain in the summer months; and because observers could not fail to notice that the grass was light, short, dry, and apparently withered. To their eyes it contrasted most unfavorably with the luxuriant green herbage of the well-watered belt along the North Saskatchewan. It did not occur to them that the grass of the plains might be the product of peculiar atmospheric conditions, and that what had been food in former days for countless millions of buffaloes, whose favorite resorts these plains had been, would in all probability be good food for domestic cattle. The facts are that spring comes early in these far western districts, and that the grass matures in the beginning of June, and turns into nutritious hay. If burned, there is sufficient moisture in the soil to produce a second growth. We saw at different points, towards the end of August, green patches where little prairie fires had run some weeks previously. If there is enough moisture for such a second crop, it seemed clear to us that there must be enough for cereals. The fact is that the roots of wheat penetrate to a great depth in search of moisture or nutriment. The intense cold of winter, instead of being a drawback, acts in the farmer's interest. The deeper the frost goes, the better. As it thaws out gradually in the summer it loosens the sub-soil, and sends up the needed moisture to the roots of the grain. Coal, too, of cretaceous age, being abundant, no one who is at all robust objects to the intense dry cold. Sufficient moisture being all but certain, the lack of rain makes harvesting sure, while the purity and dryness of the air and the continual breeziness render the climate most healthful and pleasant. But, notwithstanding these facts, the impression was general that, at any rate from *le grand Coteau du Missouri* to the Rocky Mountains, the country was worthless. The company, therefore, determined to try experiments that would be conclusive. Late in the autumn of 1883 men were sent



out with instructions to plow up a few acres at intervals of about twenty miles along the line. This work was done, necessarily, in rough-and-ready fashion. The sod was turned up, and then the teams, put on board the next train, were moved on to another point. The following March seeds of various kinds were sown on the plowed sections and roots planted. No attempt at cultivating, cleaning, or protecting could be made, and yet the result was a magnificent crop on the experimental "farms." Every one who knows anything of prairie farming will acknowledge that a more rigorous test could not have been tried. The south of the beautiful Bow River is the chosen country of our cow-boys, a race—from Texas to the North—free, fearless, and peculiar, to whom all the rest of the world are "tenderfeet," and in whose eyes horse-stealing is the unpardonable sin. The transport to England of cattle from this district, and ultimately from the adjoining territories of Montana and Idaho, is certain to supply steady business to the railway; and the transport of coal on a large scale to Manitoba from the vast deposits which are being opened up near Medicine Hat and the head-waters of the Saskatchewan is still more certain. The Bow River, which takes its name from its repeated windings and doublings like an ox-bow, guides the railway into the mountains. The wide valley, inclosed by foot-hills, not very long ago the favorite haunt of the buffalo, is divided into ranches. These and all other industries in southern Alberta converge at Calgary, an enterprising little town, once a Hudson's Bay fort, on a site of ideal beauty. It fronts the illimitable plains; snow-peaked mountains, Devil's Head preëminent, tower up behind; and two impetuous glacier-fed streams meet in the natural amphitheater that has been scooped out of the surrounding hills to give it ample room to spread itself. Forty miles farther up the river, and so much nearer the best hunting-grounds in the mountains, two villages of Stonies have gathered round the Methodist Mission of Morley,—a brave and hardy tribe of mountaineers who, like their white neighbors, are taking to stock-raising, as they can no longer live by hunting. The railway climbs the valley of the Bow, crossing and recrossing, past Morley, past the mass of rock five thousand feet high called Cascade Mountain, where anthracite coal has been discovered, past the chiseled turrets of Castle Mountain, and into the core of the range, till within six miles of the summit, where it abandons the river and strikes up the bed of one of its tributaries.

The railway terminus in September, 1883, being Calgary, tourists generally stopped

there; but our party determined to push on to the Pacific. Four ranges of mountains intervened—the Rockies, the Selkirks, the Gold, and the Cascades. One engineer told us that it was problematical whether we should get through. Another said that we should not. We determined to try, and we now congratulate ourselves that we were the first to cross from one side of the four ranges to the other side, on the line on which the railway is constructed.

It was a journey to be remembered. I have seen many countries, but I know none where there are such magnificent rock-exposures for a hundred miles continuously as up the valley of the Bow, from Calgary to the summit of the Rockies. The general elevation of the valley is between four and five thousand feet, and the mountains on each side are only from one to six thousand feet higher; consequently, the beauty does not consist in the altitude of the mountains. Beside the Andes or even the Alps they are hardly worth speaking about; but nothing can be finer than the distinct stratification, the variety of form and clearness of outline, the great masses of bare rock standing out as if piled by masons and carved and chiseled by sculptors. Photography alone could bring out their amazing richness in detail. Scenes of gloomy grandeur present themselves at every point for several miles along the summit; and down the western slope the views at times are even more striking. But our journey down the Kicking Horse should be read in the "England and Canada" of the distinguished engineer with whom I traveled, by those who wish to know more of our experiences.

When we crossed the Rockies the hitherto unconquered Selkirks rose before us. To understand the position of this range, take a map and look for the springs of the Columbia. This greatest of salmon rivers rises in Canada, and runs north-west so persistently that it appears doomed to fall into the Fraser. But, reaching the neighborhood of Mounts Brown and Hooker, it seems to have had enough of us, and accordingly, sweeping right round in a "Big Bend," it makes straight for Washington Territory, cutting through all obstacles, the *Dalles* with the significant *Dalle de Mort*, and then spreads out into long, broad, calm expanses known as the Upper and Lower Arrow Lakes. Within that great loop which it makes on our soil are inclosed the Selkirks. As they extend only to the Big Bend of the Columbia, our engineers had no concern with them when it was supposed that the Canada Pacific Railway was to run farther north; but when the company decided that they must have as nearly as possible an air-line from Winnipeg west to the ocean, the question of whether a pass

could
impo
tour
Big
the
plain
back
of th
along
could
anot
its co
two r
gates
the C
Selki
asked
their
Mobe
the Se
to and
Mo
1865
to the
Colum
ing pr
vincia
from
colony
then
One d
tangle
brush
every
where
one o
follow
called
be cal
Gold
broke
thank
be ma
to the
vince
exten
If a p
kirks.
He se
plore
His l
could
they
rang
then
Koo
Indi
or ri
rath
fores
roun

could be found across the Selkirks became important. If no pass could be found, a détour must be made away to the North by the Big Bend. Passes were known to exist through the other three ranges that rise between the plains and the Pacific. The Rockies proper, the backbone of this continent, are cloven north of the boundary line by half a dozen rivers, along the valley of any one of which a railway could be carried with ease to a summit where another stream is generally found beginning its course down the western slope. Then, the two ranges nearest the Pacific have also open gates wide enough for a railway. But between the Gold Mountains and the Rockies rose the Selkirks, apparently without a break. When asked about a pass here, the Indians shook their heads; so did the engineers, Mr. Walter Moberly excepted. He knew something about the Selkirks; but though he pointed out the way, to another fell the honor of solving the problem.

Moberly had discovered a first-rate pass in 1865 through the Gold Mountains, greatly to the satisfaction of himself and all British Columbia. Gold had been found by enterprising prospectors at the Big Bend, and the provincial government, anxious to have a trail cut from the navigable waters in the heart of the colony to the new Eldorado, sent Moberly, then assistant surveyor-general, to explore. One day, not far from Shuswap Lake, among tangled mountains choked with dense underbrush and fallen timber, valleys radiating to every point of the compass, but leading nowhere, he saw an eagle flying to the east up one of the valleys. Accepting the omen, he followed and discovered the pass which he called after the eagle, though it might more fitly be called by his own name. Previous to this the Gold range had been supposed to be "an unbroken and impassable wall of mountains," but, thanks to Moberly, a wagon-road could now be made from the settled part of the province to the Columbia, to be followed—he was convinced—by a railway that would in due time extend to the fertile plains of the North-west. If a pass could only be found across the Selkirks, he felt that his work would be completed. He sent one and then another of his staff to explore, but their reports were discouraging. His Indians knew nothing, except that they could not take their canoes that way. When they wished to get to the other side of the range, they descended the Columbia, and then crossed over to its head-waters by the Kootenay River. To them time was no object. Indians will go a hundred miles in a canoe, or ride across a prairie for the same distance, rather than cut through a mile of brush. In a forest they will walk for a hundred yards round a fallen tree, and others will continue

for years to follow the trail, rather than be at the trouble of cutting through the obstruction. Moberly did not despair. He saw a fracture in the range, almost corresponding to the fracture of the Eagle Pass in the Gold range. Crossing the Columbia, though it was late in the season, and entering the mouth of this fracture, he forced his way up the banks of a stream called the Ille-Cille-Waet, chocolate-colored from the grains of slate it holds in solution. Twenty or thirty miles from its mouth the Ille-Cille-Waet forked. Trying the north fork, it led him into the slate range, intersected by innumerable veins of promising-looking quartz that prospectors have yet to test, but to nothing like a pass. His Indians then struck. He used every means to induce them to go with him up the east fork, but in vain. The snow had begun to fall on the mountains, and they said that they would be caught and would never get out again. Reluctantly Moberly turned back, and as the colony could afford no more explorations, the Big Bend diggings not turning out as had been anticipated, he had to content himself with putting on record that the easterly fork of the Ille-Cille-Waet should be examined before a route for a transcontinental railway was finally determined on.

Thus it happened that up to 1881 no man had crossed the virgin range. It was covered with heavy timber almost up to the snow-line. Without let or hindrance herds of noble caribou trotted along ancestral trails to their feeding-grounds or to water. Bears—black, brown, cinnamon, and grizzly—found in sheltered valleys exhaustless supplies of the berries on which they grow fat. From the opposite flanks of the range, east and west, short swollen streams rush down to join the Columbia, their sands often indicating gold; while on the south, where the drainage flows into the Kootenay Lake and River, which also feed the Columbia, rich mines of argentiferous galena are now being worked. But no one knew of a pass.

In February, 1881, the Syndicate appointed Major A. B. Rogers, C. E., engineer of the Mountain Division of the Canada Pacific Railway. He seemed about as unlikely a man for the work of ascertaining whether the Selkirks problem was soluble as could have been chosen. He knew little or nothing of mountains; his previous experiences had been in States where there is no counterpart of the characteristic scenery and difficulties of British Columbia. But Major Rogers, like a true descendant of the Pilgrim or Puritan fathers, is a man who goes to the particular wilderness to which he may be appointed, asking no questions. Naturally intense, self-reliant,

and scornful of appearances, the opposite schooling of an old-fashioned Down-East training, the rough experiences of engineer and frontier life have made him so downright that he is apt to be appalling to ordinary mortals. Though between fifty and sixty years of age, hair and beard now white, no youngster in his party will plunge into the grimmest mountain ranges with as little thought of commissariat or as complete a contentment of danger, and no Indian will encounter fatigue or famine as stoically. Hard as nails himself, he expects others who take service with him to endure hardness; and should there be shirking, he is apt to show his worst side rather than be guilty of what he has scorned as hypocrisy in others. He fitted out at Kamloops for his first attempt on the Selkirks. The wonder is that he did not start with rifle on shoulder and a piece of pork in his pocket, two or three Indians perhaps carrying blankets and a few fixings; for at that time he thought that a gun ought to feed a party. He does not think so now. Man can have but one paradise at a time. If he goes into the mountains to hunt, he can do that; if to prospect, he can do that, with a slightly different outfit; if to discover a pass or to get through to a given point by a given date, he may or may not succeed,—but it is quite certain that he cannot combine the three characters, or even two, on the one expedition. A bear or caribou may lead you miles from your course; and if you shoot him, your Indians have a capital excuse for delay, while they regard the meat as simply so much "kitchen" to their stock of pork and bacon.

The Major and his nephew, Mr. Albert Rogers, hiring at Kamloops ten Shuswap Indians from the Roman Catholic Mission to carry their packs, started in April to force their way to the east. They succeeded in reaching the core of the Selkirk range, by following the east fork of the Ille-Cille-Waet; but, like Moberly on the north fork, they got only to a *cul de sac*, and their packs having become ominously light, they—heavy with the consciousness of failure—came to the conclusion that retreat was inevitable. Before retracing their steps, however, they climbed the divide to see if any break could be detected in the range. Yes; a valley appeared in the direction of an unexplored little affluent of the Ille-Cille-Waet, and, apparently connected with it, a depression extending to the east. Everywhere else, all around to the horizon, nothing but "snow-clad desolation." The result of five or six weeks' endurance of almost intolerable misery was this gleam of hope.

Our journey enabled us to understand what they must have suffered. The underbrush is

of the densest, owing to the ceaseless rain. Black flies or mosquitoes do their part unweariedly. What with fallen timber of enormous size, precipices, prickly thorns, beaver-dams, marshes full of fetid water to be waded through, alder swamps, lakelets surrounded by bluffs so steep that it would almost puzzle a chamois to get over or around them, we had all we wanted of the Ille-Cille-Waet and the Eagle Pass. But they had started too early in the season. The snow was not only deep but it was melting and rotting under spring suns and rains, and therefore would not bear their weight. Down they sank at every step and often into the worst kind of pitfalls. A first their loads were so heavy that they had to leave part behind, and then, after camping early, return wearily on their tracks for the second load. The Indians would have deserted them a dozen times over, but the Major had arranged with the Mission that if they returned without a certificate they were to get a whipping instead of good pay. Nothing but pluck kept them pegging away; but in spite of all they failed that year. The following May the Major made his attack from the other side of the range, and again he was unsuccessful. Swollen torrents and scarcity of supplies forced him back to his base, at the point where the Kicking Horse River joins the Columbia. On this occasion, had it not been for the discovery of a canoe, he and his party would have starved. Sorely against their will he had put them on half rations, but he gladdened their hearts one morning by announcing that it was his birthday, and producing a little sugar to sweeten their tea.

Nothing daunted, he started again the same summer, in the month of July, from the same base, and succeeded. Proceeding up the valley of the Beaver, a large stream that enters the Columbia through an open cañon, and then following the course of one of its tributaries appropriately called Bear Creel, he at length found the long-sought-for pass. He saw the mountain from the summit of which the year before he and his nephew had noticed the depression extending to the east. Not content while anything remained undone he made for the Ille-Cille-Waet, and followed it down to the north fork, ascended it to ascertain if its head-waters would connect with a tributary of the Beaver, and so perhaps afford something better; but nothing better or rather nothing at all, was found. The Selkirks have only one pass, but it is better than the western slope of the main chain by the Kicking Horse. And an American has had the honor of finding that one on behalf of Canada! All honor to him!

Compared with our experiences down the

Xi
of
all
so
out
rang
of t
The
over
bott
endi
Beav
then
dens
of th
Our
fit-lo
down
Major
They
and b
been
party
beside
seen a
zly. I
confid
are stil
to do r
the sur
such a
the tra
high b
blackb
grapes,
we cou
ing. T
clusters
ered th
dar tha
feet. I
garden.
surely t
open m
Major
party a
pointed
Summit
posite e
our yew
cheer in
moss-gr
the stor
of more
not be
hotel!"
America
glaciers
above t
having v
giving t

Kicking Horse, the ascent of the eastern slope of the Selkirks was remarkably easy. The valley of the Beaver contracts near its mouth, so it is no wonder that observers from the outside formed an incorrect idea of its importance. The Ille-Cille-Waet on the other side of the range ends its course in the same way. The two streams by which the Selkirks are overcome are thus something like two long bottles with their narrow necks facing and ending in the Columbia. The trail up the Beaver led through forests of great cedars, and then of noble spruce, hemlock, and pine, so dense that it was impossible to get any views of the range before reaching the Rogers Pass. Our first evening was spent with a pleasant, fit-looking lot of fellows, who were working down from the summit under the leadership of Major Critchelow, a West Point graduate. They did all they could for us, sharing tents and blankets, as well as porridge, as if we had been life-long comrades. Major Critchelow's party had been at work for three months, and, besides caribou and other large game, had seen about fifty bears, chiefly black and grizzly. I can, with a reasonable measure of confidence, assure sportsmen that the bears are still there, for the engineers were too busy to do much hunting. We saw on our ride to the summit next morning why the place was such a favorite bear center. On both sides of the trail grew an extraordinary profusion of high bushes laden with delicious wild fruits, blackberries and gooseberries as large as small grapes, and half a dozen other varieties, that we could pick by handfuls without dismounting. The rowan-tree drooped its rich red clusters over the bushes, and high above towered the magnificent forest primeval, one cedar that we passed having a diameter of nine feet. It was like riding through a deserted garden. Emerging from the forest, after a leisurely three hours' ride, into a saucer-shaped open meadow covered with tall thick grass, Major Rogers, who had kindly joined our party at the mouth of the Kicking Horse, pointed to a little stream, saying, "That is Summit Creek, and there," pointing to the opposite end of the meadow, "is the summit where our yew stake is planted." We gave a hearty cheer in his honor, and taking our seats on a moss-grown natural rockery, heard him recount the story of the discovery of the pass. A scene of more mingled grandeur and beauty could not be desired. "Such a spot for a summer hotel!" would, I think, be the first cry of an American tourist. Snow-covered mountains, glaciers accumulating in lofty comb, and high above the snow, the looser shales of the peaks having weathered off, fantastic columns of rock giving to each mountain form an individual-

ity that stamps it permanently on the memory; while we in the sunny valley at their feet dined on wild fruit, and our horses rolled contentedly among the deep succulent grasses! Syndicate, the distinctive peak among the mountains at the summit, is a veritable Canadian Matterhorn, but it is not seen till you begin the western descent.

The Selkirks did not let us off so easily as we had hoped from our experience of the ascent. Where the trail ended the Major gave us his nephew as a guide and half a dozen athletic, obliging young men to carry our packs to the second crossing of the Columbia. I shall never attempt to pioneer through a wilderness again, much less to carry a pack; and of all wildernesses, commend me to those of British Columbia as the best possible samples to test wind and limb. It would simply weary readers to go into details of struggling through acres of densest underbrush where you cannot see a yard ahead, wading through swamps and beaver dams, getting scratched from eyes to ankles with prickly thorns, scaling precipices, falling over moss-covered rocks into pitfalls, your packs almost strangling you, losing the rest of the party while you halt to feel all over whether any bones are broken, and then experiencing in your inmost soul the unutterable loneliness of savage mountains. Those who have not tried would not understand. It took us five days to make seventeen miles, and we did our best. Right glad were we to see the Columbia again, a river now twelve hundred feet wide, full from bank to bank, sweeping past this time to the south with a current of six or seven miles an hour. We struck it nearly opposite the Big Eddy, and one or two tents and a group of Indians among the aspens on the bank a little farther down comforted us with the thought that we could at any rate get what man considers the one thing needful in the wilderness—a supply of food. It might have an evil smell, but it would be food; and starvation, at any rate, was now out of the question. Back a little from the noble river rose the Gold Mountains, cloven almost to the feet by the Eagle Pass.

The Indians came across in their canoes and ferried us over; and we spent the night on the river bank, well to windward of Camp Siwash. Under a half-moon shining in a blue, cloudless sky, a great glacier on our right reflected a ghostly light, and every peak came out clearly defined in the pure atmosphere. The rush of the great river and the muffled roar of the distant falls of the Ille-Cille-Waet alone broke the perfect stillness. Four or five camp-fires seen through the trees, with dusky figures silently flitting about, gave life to the scene. Reclining on spruce boughs, softer and more fragrant than beds of down, we felt the

charm of frontier or backwoods life. Two or three hours after, awakened by rain first pattering on tent and leaves and then pouring down in earnest, the charm was forgotten. One had left his boots outside, another had hung his clothes near the camp-fire, and we knew that the men were lying on the ground, rolled in their blankets, and that to-morrow every pack would be fifty per cent. heavier to carry. We were still in the rainy region. Even at night but one since leaving the summit of t. Selkirks there had been rain with thunder and lightning; and yet, in spite of the discomfort, not a man showed a sign of discontent. Sybarites still growl over their crumpled rose-leaves, but the race is not deteriorating.

Before leaving Winnipeg Mr. Fleming had telegraphed to Hudson's Bay officials in British Columbia to send a party from Kamloops to meet us with provisions at some point on the Columbia near the mouth of the Eagle Pass. When we saw the Indians every one was sure that the Kamloops party had reached the rendezvous before us. Our disappointment was brief, for the same evening half a dozen men were heard hallooing and struggling through the pass. This was our eagerly expected party, and great and natural was the delight at making such wonderfully close connections in a trackless wilderness; but our countenances fell when, asking for the provisions, the leader simply handed us a large sheet of foolscap on which was inscribed in fine legible hand a list of supplies *cached* at a distance of some days' journey! They had been able to carry barely enough for themselves, and had we not wisely husbanded our pork and flour, they and we might have starved.

Next morning we started up the Eagle Pass, with our sheet of foolscap and the Kamloops men. They brought us good news at any rate. In three or four days we should get to horses and supplies, and in a day or two thereafter to a wagon-road that had been commenced from Lake Shuswap by the company that is working the silver-bearing galena mines on the Kootenay. It turned out as they said. We found the horses, and a wealth of good things; cups and saucers of crockery were included, to our infinite amusement. The horses were of little use except to carry the packs, for better speed can be made walking than riding, and walking is safer and much more pleasant—if there can be pleasure on a trail along the Eagle River. We reached the wagon-road, Mr. G. V. Wright, in the center of a canvas town, superintending its construction, and ready to do anything for us. We sat luxuriously stretching our legs in the spring wagon in which he sent us on the

beautiful star-shaped Lake Shuswap—last of a series of lakes strung like beads on the river that drains the western slope of the Eagle Pass. There the Hon. Mr. Mara, having heard of our approach, had kindly kept the steamer *Peerless* waiting for us. The dangers and the toils of our journey were over.

With regard to the scenery in the Selkirk and Gold Mountains little need be said. Rain or snow falls almost unceasingly. The clouds from the Pacific shed some of their contents on Vancouver Island and the Cascades; then, rising high above these coast mountains, they float easterly over a wide intervening region, and empty their buckets most bountifully on the Gold range. A moss carpet several inches thick covers the ground, the rocks, the fallen timber, in every direction—mosses exquisitely delicate, as thickly and uniformly sown as if green showers had fallen silently from the heavens to replace the deep white snow of winter. From the branches of the trees hang mossy streamers. Softer than velvet is the coating of every bank. Dense underbrush and ferns from four to six or seven feet high fill the narrow valleys, save where the prickly devil's-club and enormous skunk cabbage dispute the ground with the ferns. Emerging from the dark-blue waters of Lake Shuswap and sailing the South Thompson, the air, the soft outlines of the hills, the park-like scenery recalling "the upper portions of the Arno and the Tiber," we come upon the intervening region of elevated broken plateau that extends from the Gold range west to the Cascades. Its physical character is the exact opposite of the humid mountains left behind. Low rounded, russet-colored hills, and benches covered with bunch-grass, or, where that has been too greedily cropped, with sage and prickly pear, take the place of lofty, rugged peaks and valleys choked with heavy timber. This intervening region that extends to the Cascades has everywhere a dry, dusty, California look, except where some little creek has been made to do duty in the way of irrigation. Then we have a garden plot, a field, or a ranch converted into a carpet or ribbon of freshest green contrasting beautifully with the surrounding gray or russet. These bits of green are like oases in the desert. They yield abundantly every variety of fruit or grain. Tomatoes, water- and musk-melons, and grapes ripen in the open air. Wheat, as in the most favored spots of Oregon and Washington Territory, yields from forty to seventy bushels to the acre. At Lytton the Fraser comes down from its long circuit round the far north country, through gorges inclosed by snow-crowned mountains, to receive the tribute of the united Thompson. The clear blue Thomp-

sor
sw
ing
of
ous
pen
soil
ser
th
cult
stur
and
mas
B
gre
five
cons
latic
less
bian
will
pany
its i
nect
Jap
their
their
ries
drear
those
they
ignor
west
only
gold,
be su
all th
fancy
conte
amou
irriga
interv
preve
porta
prese
China
white
go up
be ol
could
A
inform
to shu
busin
come
waite
opene
hold
else h

wap—last of
ls on the river
of the Eagle
Mara, having
ndly kept the

The dangers
ce over.

in the Selkirk
be said. Rain

y. The clouds
their contents

the Cascades;
east mountains;

le intervening
s most bounti-

ross carpet sev-
und, the rocks,

ction—mosses
and uniformly

fallen silently
the deep white

branches of the
Softer than velk-

Dense un-
to six or seven

ys, save where
ormous skunk

with the ferns.
waters of Lake

uth Thompson,
e hills, the park-

per portions of
come upon the

broken plateau
ange west to the

acter is the exact
ains left behind.

ills, and benches
where that has

of lofty, rugged
h heavy timber.

extends to the
dry, dusty, Cali-

the little creek has
e way of irriga-

plot, a field, or
pet or ribbon of

autifully with the
These bits of

ert. They yield
f fruit or grain.

sk-melons, and
Wheat, as in the

and Washington
to seventy bushels

the Fraser comes
and the far north

losed by snow-
re the tribute of
ear blue Thomp-

son flows into the turbid Fraser, and the swollen torrent, deep, narrow, swirling, eddying, resistless, cuts its way through the granite of the Cascades to the sea. In this mountainous region, again, the farmer is no longer dependent on irrigation, and wherever there is soil anything can be raised. The Lower Fraser or New Westminster district is not only the most valuable in British Columbia, agriculturally, but the river is full of salmon and sturgeon, the country abounds with game, and the timber along the coast would furnish masts for all the admirals in the world.

But what will a railway get to do in this great sea of mountains? For along those five hundred miles of road on the mainland, constructed at so enormous a cost, the population, not counting Indians and Chinamen, is less than ten thousand. The British Columbians claim that a portion of the Asiatic trade will come their way, especially as the company that is building the road has announced its intention of putting on steamers to connect the Pacific terminus with the ports of Japan and China; and they also point to their fish, their mines of silver and gold, and their forests, as the complement of the prairies of the North-west. All their hopes and dreams cluster around the railway, and those whom it does not enrich will feel that they have a right to be disappointed. They ignore the fact that the people of the North-west or any other country can afford to pay only a certain price for fish or flesh, galena, gold, or anything else, and that if it cannot be supplied at said price it must be for them all the same as if it were non-existent. They fancy that the difficulty the province has to contend with is not the comparatively small amount of arable land, or the necessity for irrigation in districts otherwise good, or the intervening mountains, or the cañons that prevent river navigation, or the cost of transportation, or the great distances, but simply the presence of some thousands of industrious Chinamen. If Chinamen could only be kept out white people would come in, and wages would go up and keep up. Good prices would then be obtained for everything, and every one could live comfortably.

A most obliging merchant in Kamloops informed me that it would be as well for him to shut shop, because it was impossible to do business any longer. A few Chinamen had come to the place, and beginning as cooks, waiters, barbers, washermen, had at length opened some small shops, and were fast getting hold of the entire trade of the country. Nobody else had a chance with them, he said. I asked

why. "Oh," was the answer, given in perfect simplicity, "they are satisfied with small profits and quick returns, and they make no losses, for they refuse to give credit." He had not so learned business. His former customers, who were now buying goods at reasonable rates, agreed with him that it was a shame. I am sorry to seem to reflect on any of my British Columbian friends, or rather to reflect on their notions of commercial or political economy. They were kindness itself to me, as they are to all travelers. "They are a real nice people," said one of the engineers we fell in with; "they do cheerfully what you want, either for nothing or for an enormous price." That hits the mark. Their hospitality is beyond praise; but when they charge, you are likely to remember the bill. Three of us hired a wagon one afternoon. The boy drove us twenty-three miles in four hours, and the charge was thirty dollars. On another afternoon we engaged a man to row us in his little boat to a steamer on Burrard Inlet. It took him an hour, and we had to pay four dollars for the use of his boat and the pleasure of his company. A friend wished to negotiate for the removal of some lumber. Finding that the cost of a team was fifteen dollars per day, he preferred to do without the lumber. That such costs and charges put a stop to industrial development, that they are equivalent to total prohibition of intercourse or exchange, does not occur to the average politician. Abundance of labor is the one thing absolutely indispensable in British Columbia. Pretty much the only labor attainable on a large scale for many a year is that of Chinamen. Far from welcoming the labor, almost every one's face is set against it, even when necessity forces him to take advantage of it for the time. But this is not the place to discuss the Chinese problem. I have alluded to it simply because the railway has forced it upon our attention, and it presses for solution.

Since the Dominion was constituted the political life of Canada has centered about the Pacific Railway. Now that it is on the eve of completion, we see how great was the task that three millions of people set themselves fourteen years ago to accomplish. The work is imperial in meaning as well as magnitude, though the cost has been wholly defrayed by Canada. It is our contribution to the organization and defense of the empire. It has added to our public burdens, but our credit is better than when it was commenced. When we are told that it has cost fifty, sixty, or a hundred millions, what need one say but that it was a necessity, and that it is worth the cost?

